



T H E E C L E C T I C

— BY —  
GMH Luxury LTD.





WELCOME TO

# GMH Luxury

Our commitment to excellence in design and construction is reflected in every property we develop, from classic designs to modern masterpieces. We believe that a home is more than just a physical structure, it is a timeless piece of art, expressed with architecture.

We take pride in practical and functional properties, this is why we work with some of the most talented architects and designers in the industry to create properties that are truly unique and Timeless.

# Who We Are

GODMADE HOMES LTD is one of Africa's foremost value-driven, reliable and customer-centred housing solutions providers with several local and international architectural landmarks.

## Our Core Values



Integrity



Customer-Service



Excellence





The Location

---

# Ikoyi, Lagos

Osborne Foreshore II Estate

---

## Landmark

Lagos Polo Club  
Federal Marriage Registry  
Ikoyi Golf Club  
Glover Road Suya  
National Museum  
High-end Restaurants & Lounges,  
Omenka Gallery  
Banana Island & Environs.  
Lagos Boat Club  
Ikoyi Baptist Church  
Ikoyi Community Mosque



# Built for you and your family



Built with Extravagance in mind, poised to bedazzle you with undiluted luxury, THE ECLECTIC unique attractions take luxury living to an enviable height with an external cladding that is second to none, the architectural perfection is built to stand the test of time nestled in the centre of Ikoyi, one of Africa's extravagant city.





## The Eclectic

The ECLECTIC consists of units of 4 Bedroom Maisonette + 2 Maids Room Approx. 360Sqm. 3 Car Parks and also 5 Bedroom Penthouses on the 8th floor. The masterpiece is a self-sufficient village as it has everything you need including a movie theatre, swimming pool, and lawn tennis court, amongst other facilities and features.





## Living Room

As you enter the maisonette, you are greeted by a spacious and inviting living room. The room is adorned with high ceilings, large windows, and plush carpeting, creating an atmosphere of elegance and comfort.





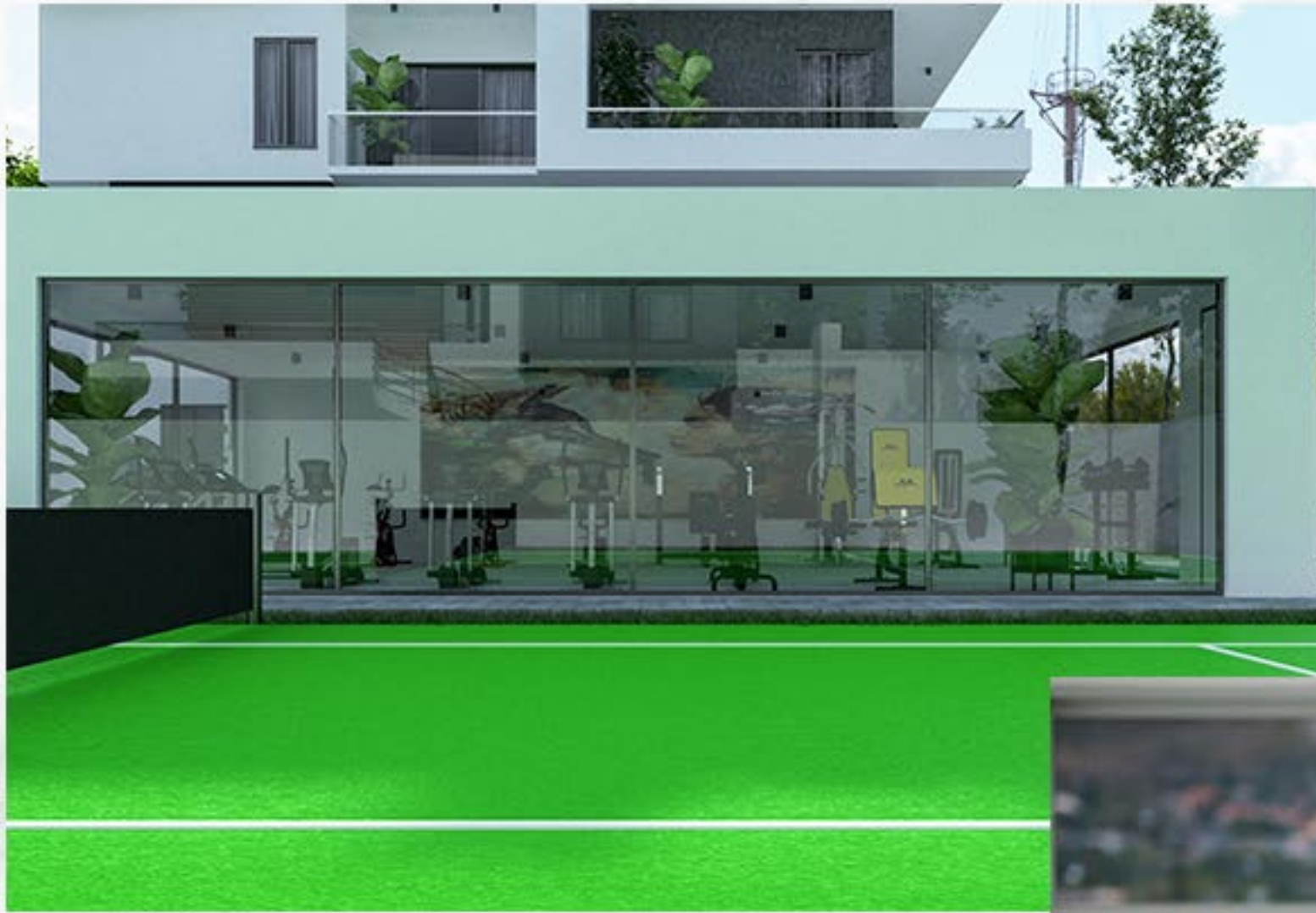


## Master Suite

It features a generously sized bedroom with large windows that offer breathtaking views and allow natural light to flood the space, offering the epitome of luxury living. This expansive space includes a spacious bedroom, a private sitting area, and a walk-in closet.

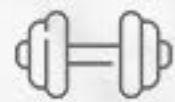






Unwind, Play, and Embrace Active Living in our Oasis.

## Active Bliss



*Techno  
Gym*



*Jogging  
Deck*



*Lawn  
Tennis Court*





# Family Swimming Pool

A haven Relaxation  
and fun for your Family





## Miele Kitchen

Our Miele kitchen in this maisonette is a chef's dream, combining functionality and style. It features top-of-the-line stainless steel appliances, oven, washing machine and dishwasher. The custom-designed cabinetry provides ample storage space for all your kitchen essentials







# Geberit Bath Fittings



Designed to offer a spa-like experience. It is a sanctuary of relaxation. It boasts exquisite marble flooring and countertops, complemented by elegant fixtures and fittings. A freestanding bathtub takes centre stage, inviting you to unwind and indulge in a luxurious bubble bath.



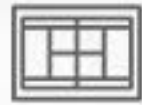
## Dining Area

Adjacent to the kitchen, the dining area is a welcoming space for enjoying meals with family and friends. The room can be designed with a large dining table and comfortable seating, creating an inviting atmosphere for entertaining guests and

# Key Features



*Green Area*



*Lawn Tennis Court*



*Swimming Pool*



*Club House*



*Jogging Deck*



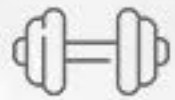
*Water Cabana & Jetty*



*Drivers Lounge*



*Four (4) Elevators*



*Techno Gym*



*Miele Kitchen*



*Jaguar Faucet*



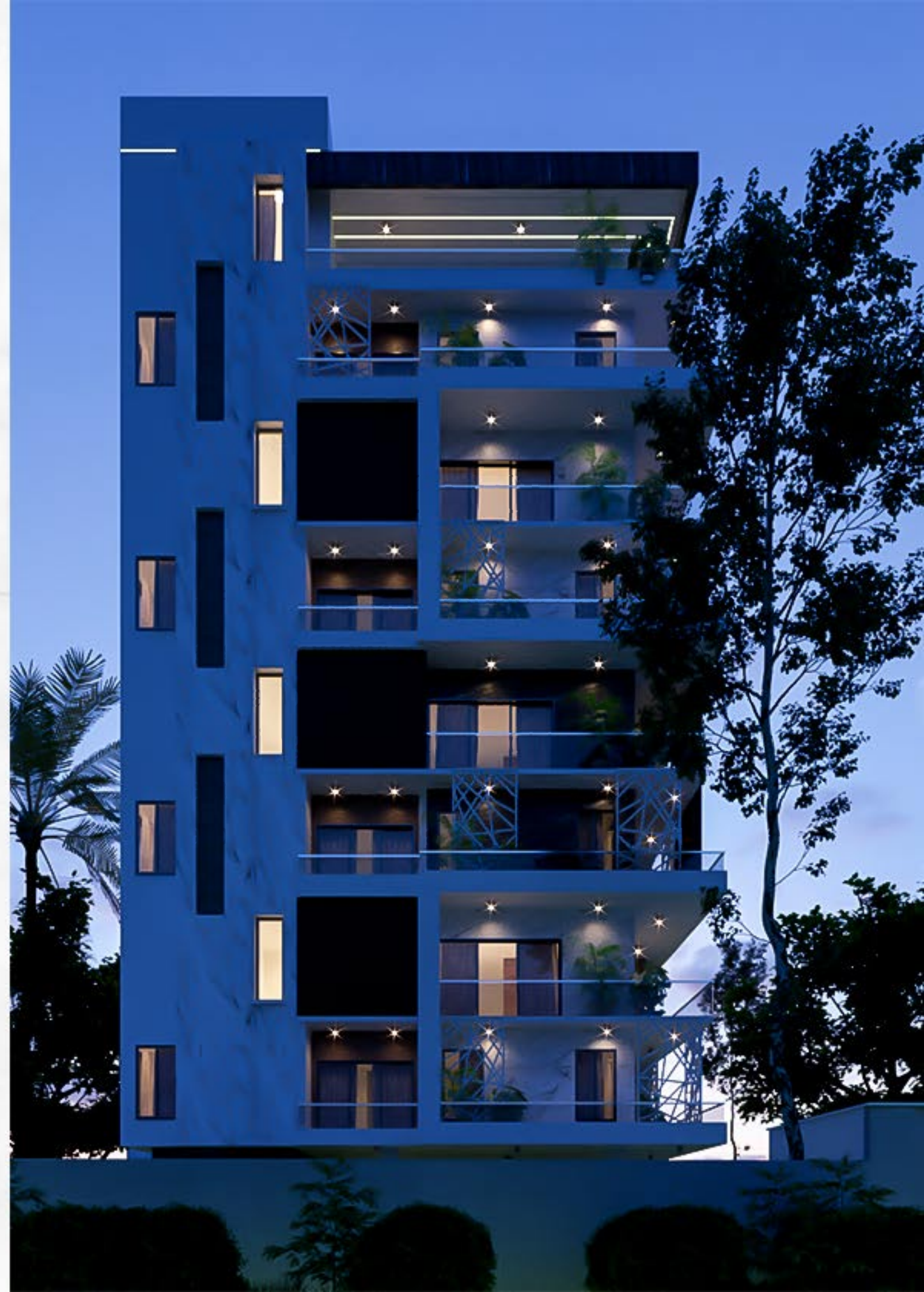
*Geberit Bath Fittings*



*Walk-in Closet*



*Ample Car Park*



# Floor Plan



*Outdoor Lounge 27sqm*



*Gym 10sqm*



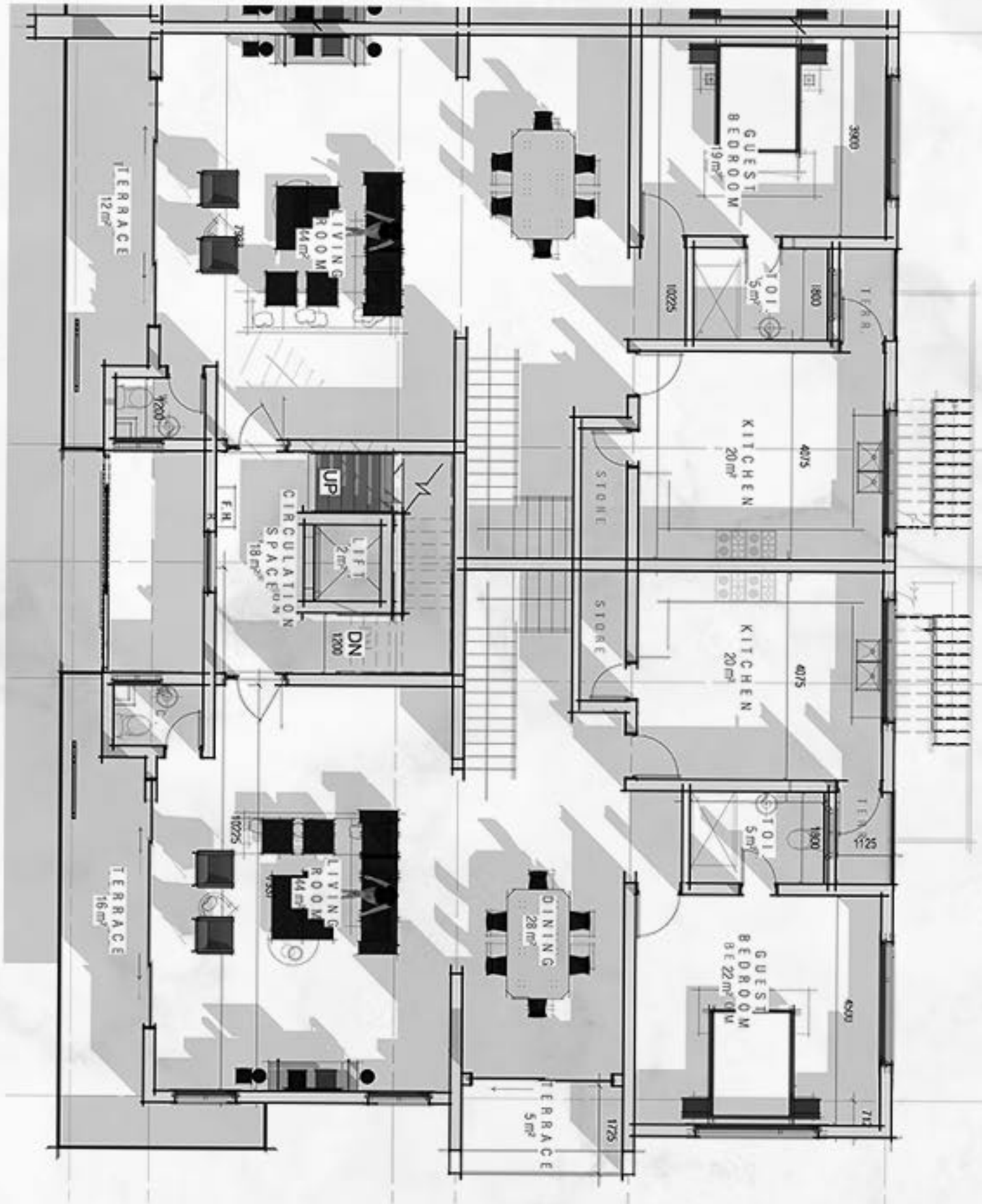
*Kitchenette 4sqm*



*Bedroom 5 17sqm*



*Closet 4sqm*



# Project Facts



*4 Bedroom 360 sqm*

---



*3 Car Park per Unit*

---



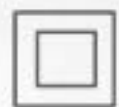
*Kitchenette 4sqm*

---



*Bedroom 360 sqm*

---



*2 Maid Rooms*

---



A DEVELOPEMENT BY **GMH LUXURY LTD.**  
*The Architects Of Luxury Living*

+234 809 697 0000

+234 809 530 0008

Email- [Sales@gmhluxury.com](mailto:Sales@gmhluxury.com)

Website - [www.gmhluxury.com](http://www.gmhluxury.com)

Disclaimer : This brochure is for informational purposes only. Information, including dimensions and features, is subject to change at discretion. Renderings and images are conceptual. The developer may make modifications at its discretion. Accuracy and completeness are not guaranteed, and recipients should verify details independently.

This brochure is not a contract; no legal or financial commitments should be made based on its contents.